

**THE BEST ALTERNATIVE  
FOR YOUR BUSINESS  
EMAIL**

inbox.eu



# **100 GB for each employee**

**With possibility to increase the size of mailbox at any time, to 200/300 GB or more.**



# Unlimited e-mail sending

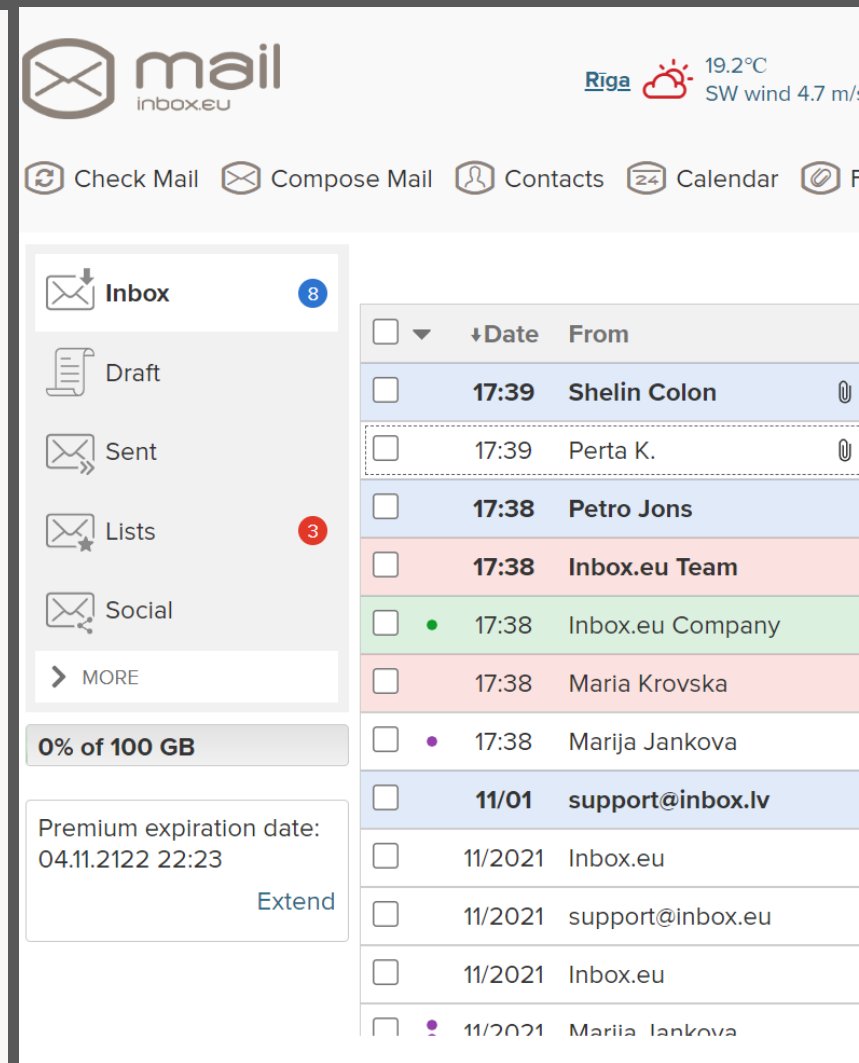
Premium account enables the possibility to send 10000 mails per day, for each your user

# Effective spam and viruses protection

We offer technical solution against spam and viruses with powerful and proven Anti-Spam and Anti-Virus filters

# Mailbox options:

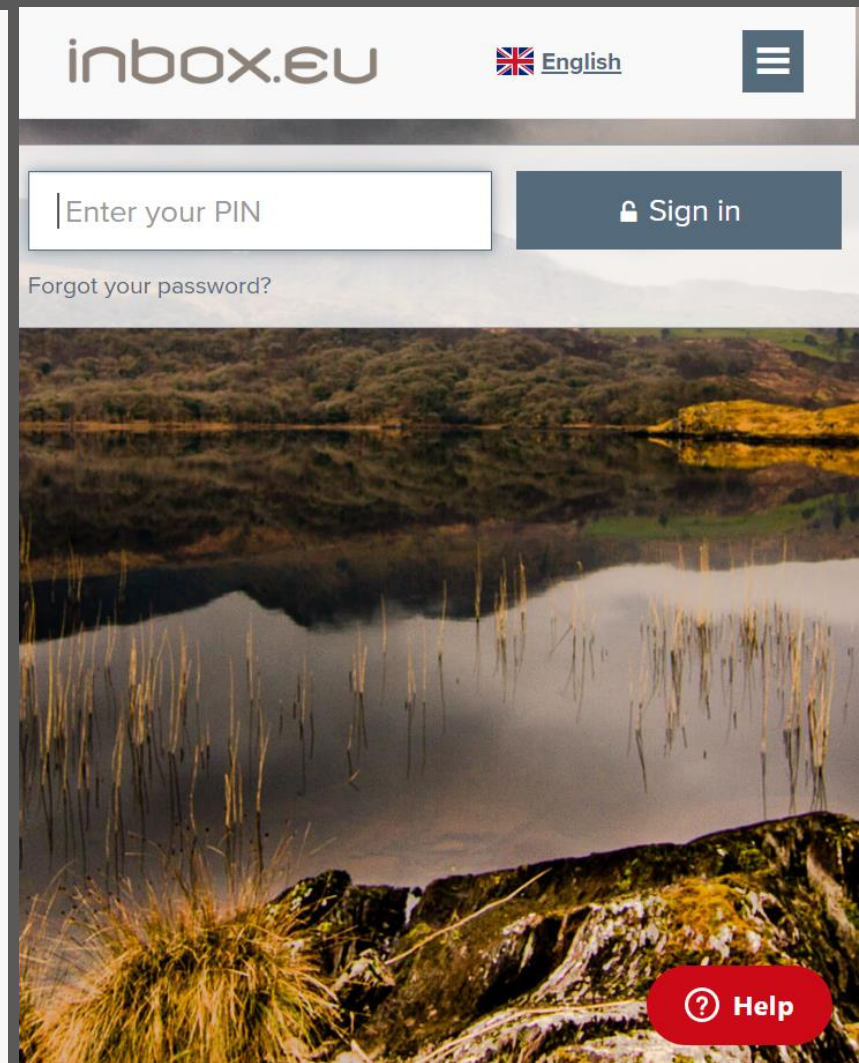
- Individuals **filters**
- Signature management
- Quick and advanced **search**
- Auto-reply for your vacation
- **Folders** and sub-folders creation
- Latvian, English, Eesti, Lietuvių, Russian, French, German and other interface languages.





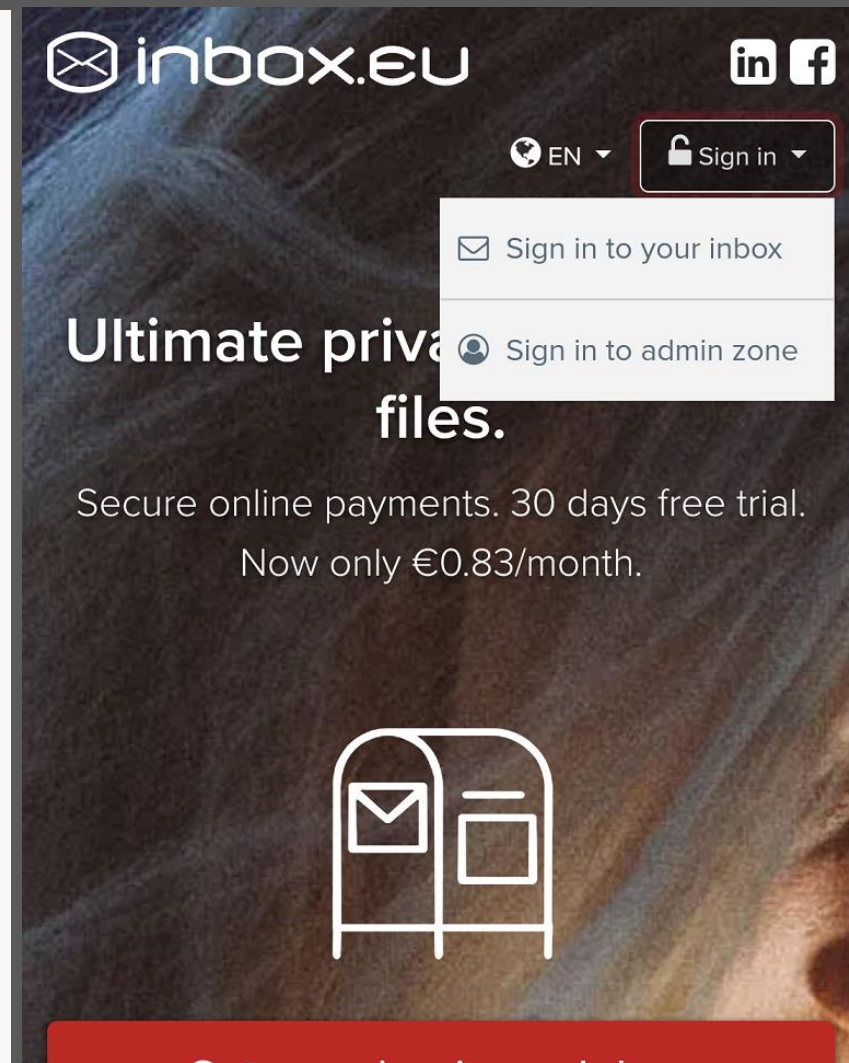
## Advanced options:

- 5 **aliases** for each mailbox
- 2-step verification (**2FA**) - extra layer of your account security, protecting your data
- Quick switching between your business mailboxes
- Message sending to **group emails** and answering from group address.



## Access to your mailbox:

- With **POP3/IMAP/SMTPs** protocols (*MsOutlook, Thunderbird, iPad, etc.*). TLS 1.2 and **TLS 1.3 supporting**. And TLS 1.0 and TLS 1.1 supporting for old systems.
- Through **web-page** ([www.inbox.eu](http://www.inbox.eu))
- With free **mobile application** («inbox.eu» app name), that is available in the Play Market, AppStore, Huawei and Samsung markets



# Data protection and privacy

- Message encryption
- SSL protocol
- Favorable for Latvian jurisdiction
- Protection against state institution or corporate intervention
- 100% GDPR compliance



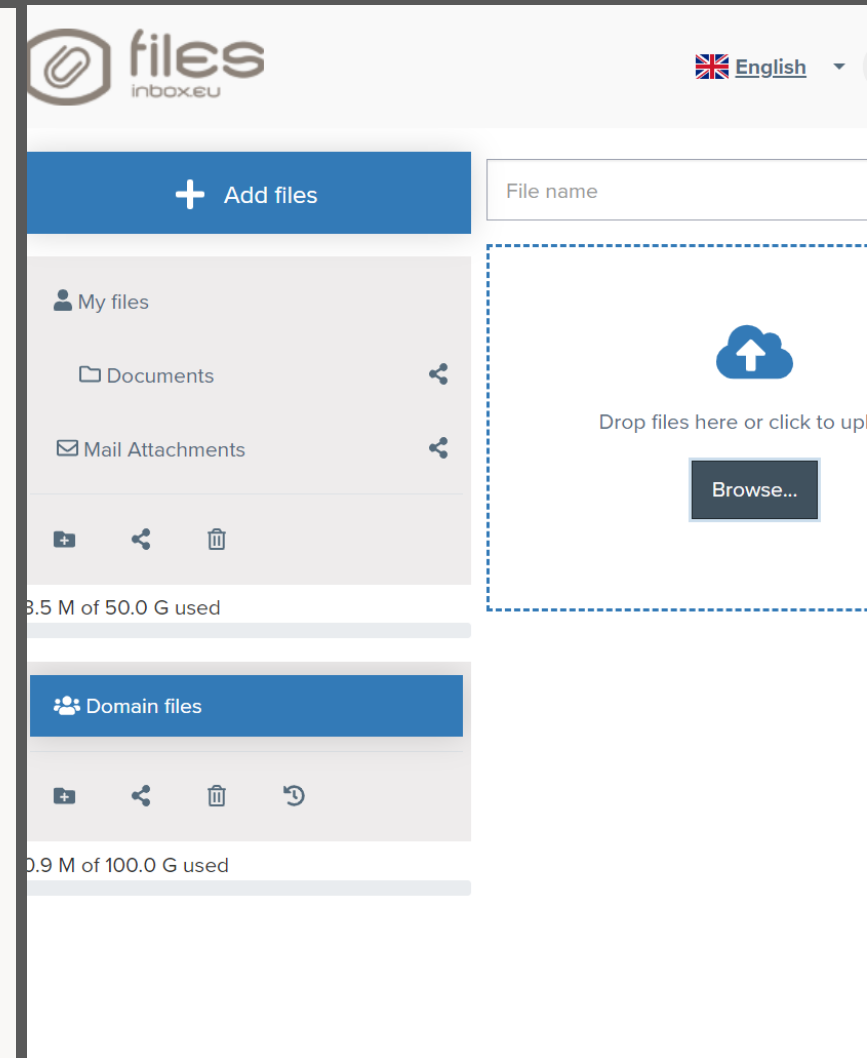


# **100 GB for your business documents**

**File storage solution for your business and  
personal use with secure access them  
anytime anywhere ([files.inbox.eu](https://files.inbox.eu))**

# 50 GB for personal files

- Presentations, documents, videos, high-resolution photos and other type of files can be stored and shared in your personal cloud at no additional cost
- No time limits on file saving
- Upload files up to 2,5 GB!





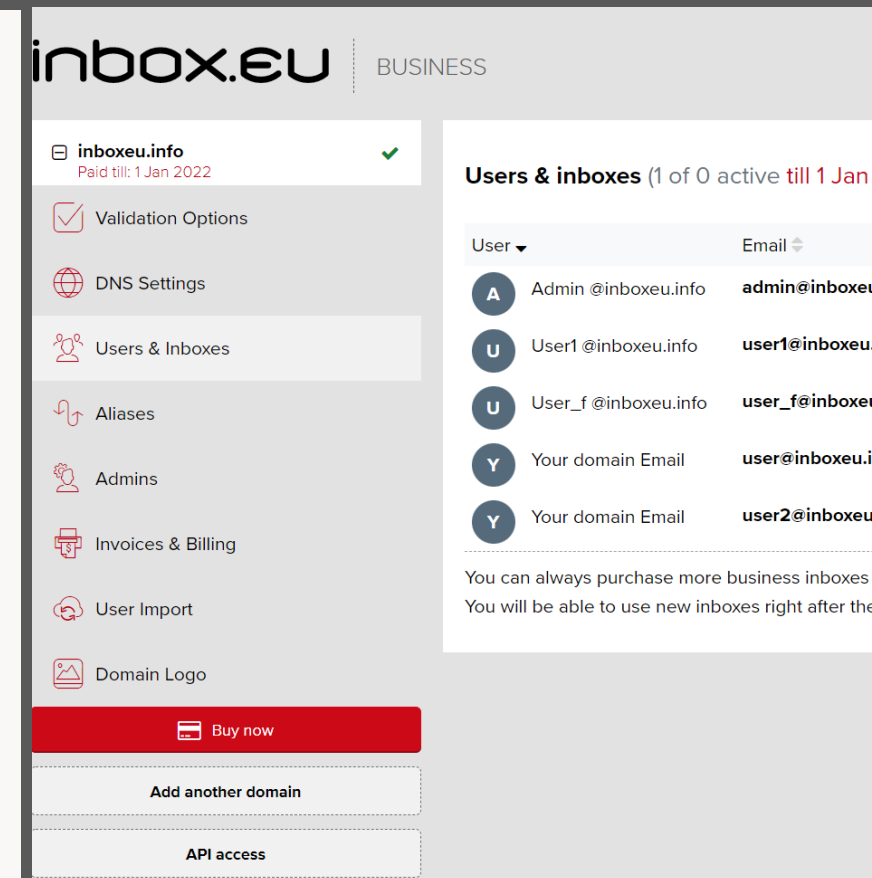
**Inbox.eu =  
email &  
files storage &  
calendar &  
contact service**

**We are not only email!**



# Administrator panel with easy e-mail management

- User creation with easy administration – change password, add/remove forwards, IMAP activation and etc.
- Group addresses creation (for example: *all@domain.lv*) and administration.



# Possibilities

- Unlimited amount of mailboxes for each domain
- Multiple administrators can administrate your mailboxes
- Unrestricted access to mailboxes through admin panel

The screenshot displays the inbox.eu BUSINESS admin interface. The top navigation bar includes the 'inbox.eu' logo and a 'BUSINESS' label. A sidebar on the left contains a menu with options: 'inboxeu.info' (with a green checkmark and 'Paid till: 1 Jan 2022'), 'Validation Options', 'DNS Settings', 'Users & Inboxes' (highlighted), 'Aliases', 'Admins', 'Invoices & Billing', 'User Import', and 'Domain Logo'. Below the sidebar are three buttons: a red 'Buy now' button, a dashed 'Add another domain' button, and a dashed 'API access' button. The main content area on the right is titled 'Users & inboxes (1 of 0 active till 1 Jan 2022)'. It features a table with columns 'User' and 'Email'. The table lists five entries: 'Admin @inboxeu.info' (admin@inboxeu.info), 'User1 @inboxeu.info' (user1@inboxeu.info), 'User\_f @inboxeu.info' (user\_f@inboxeu.info), 'Your domain Email' (user@inboxeu.info), and 'Your domain Email' (user2@inboxeu.info). Below the table, a note states: 'You can always purchase more business inboxes. You will be able to use new inboxes right after the purchase.'

User	Email
Admin @inboxeu.info	admin@inboxeu.info
User1 @inboxeu.info	user1@inboxeu.info
User_f @inboxeu.info	user_f@inboxeu.info
Your domain Email	user@inboxeu.info
Your domain Email	user2@inboxeu.info

# E-mail migration & support

- Possibility to migrate your e-mail using IMAP with our integrated function «User import» or by your own.
- The Inbox.eu team can perform the migration process, but in this case we will need to have a list of your e-mails and passwords
- 24/7 technical human support and quick help with migration and other issues

## Server type

- ☒ Autodetect/I don't know
- ☐ Cyrus
- ☐ Dovecot
- ☐ Microsoft Exchange
- ☐ Microsoft Office 365
- ☐ Gmail/G-suite/Workspace legacy auth  
(Enable "Less secure apps" option for each mailbox, unreliable and deprecated)
- ☐ Gmail/G-suite/Workspace web OAuth2  
(You will need to click "Add Gmail/G-suite/Workspace account" to authorize each account via web form, reliable)
- ☐ Google G-suite/Workspace service account  
(For custom google domains with domain wide delegation service key, reliable)
- ☐ Other



# Price for your email address

**9,99 € / year**

**(0,83 € / month)**

**For 20 users per year:**

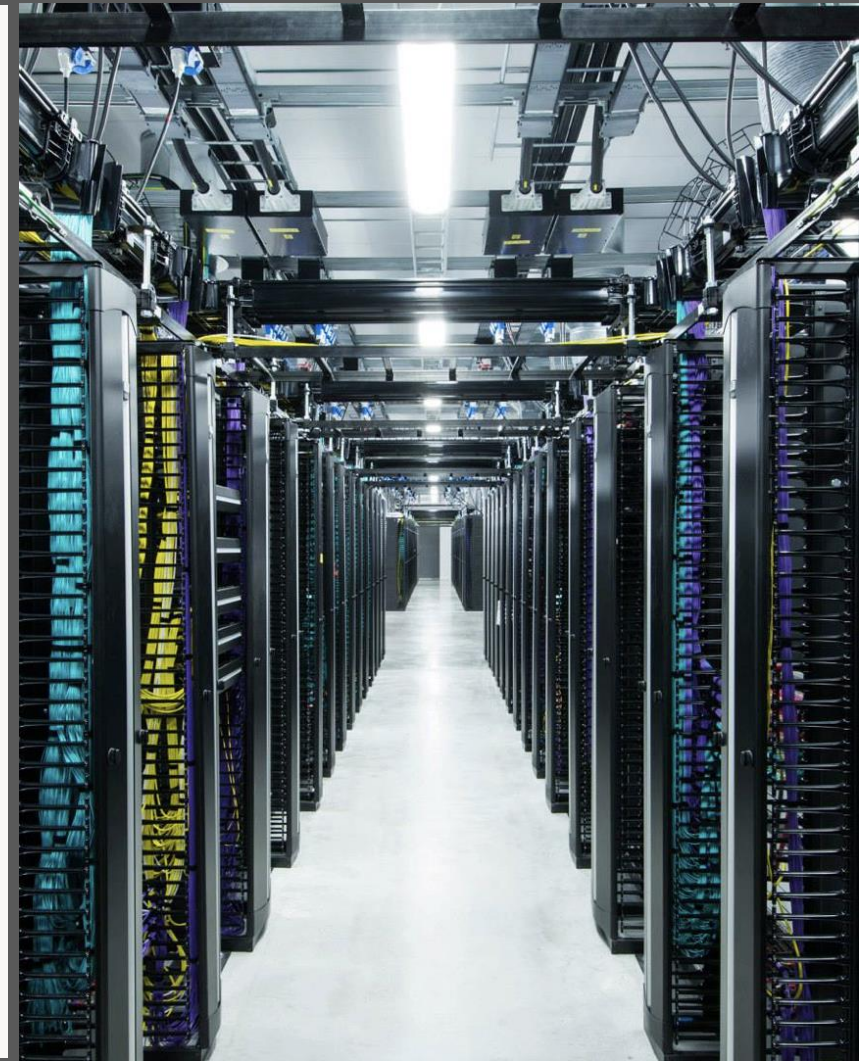
**199.80 € / year (16,65 € / month)**

*\*currently payments are made annually, but if necessary can be made monthly after your request*

# About Inbox.eu

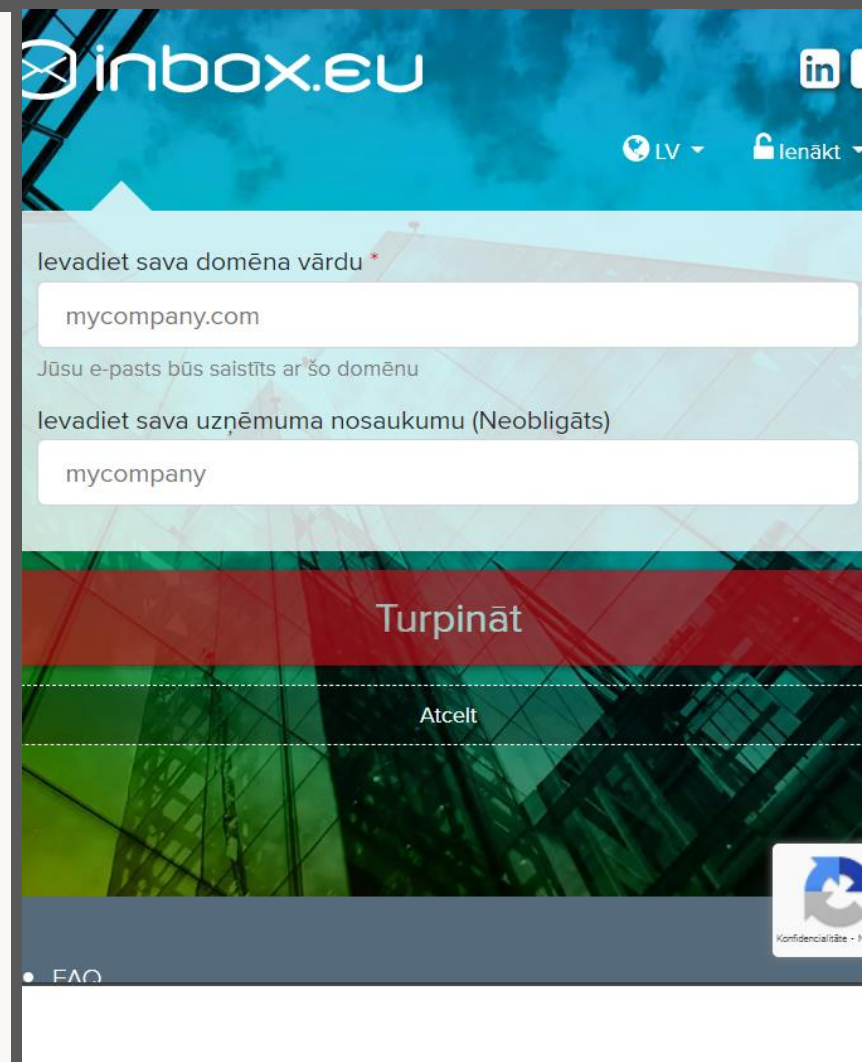
Inbox.eu – for more than 10 year provide functional **custom email address for owners of registered domains**, regardless where your domain is registered.

All data is safely stored on our own servers in Europe, in **full compliance with EU General Data Protection Regulation (GDPR)**.



# Let start!

1. Create your administrator' account for your email
  - <https://www.inbox.eu/en/signup/business>
2. Do domain validation
3. Create mailboxes with your domain name or migrate your current mailboxes with messages to inbox.eu system



The screenshot shows the 'inbox.eu' website's business signup page. The header features the 'inbox.eu' logo, a language selector set to 'LV', and a 'Ienākt' (Login) button. The main form area has two input fields: the first is labeled 'Ievadiet sava domēna vārdu' (Enter your domain name) with a red asterisk, and the second is labeled 'Ievadiet sava uzņēmuma nosaukumu (Neobligāts)' (Enter your company name (Optional)). Both fields contain the text 'mycompany.com' and 'mycompany' respectively. Below the inputs, there are two buttons: 'Turpināt' (Continue) in a red box and 'Atcelt' (Cancel) in a light blue box. The footer includes a link to 'FAQ' and a privacy policy icon labeled 'Konfidencialitāte'.

inbox.eu

LV Ienākt

Ievadiet sava domēna vārdu \*

mycompany.com

Jūsu e-pasts būs saistīts ar šo domēnu

Ievadiet sava uzņēmuma nosaukumu (Neobligāts)

mycompany

Turpināt

Atcelt

FAQ

Konfidencialitāte



# CONTACTS



Please contact with us via email  
**[info@inbox.eu](mailto:info@inbox.eu)** or phone **+371  
673 59 627**